



Summer  
May-August

# NATURAL RESOURCE PROGRAMS

Mercer Slough Environmental Education Center

Lake Hills Greenbelt Ranger Station

Lewis Creek Visitor Center



***Bellevue Parks &  
Community Services***

Natural Resource Division





# TABLE OF CONTENTS

**Special Events/Species of the Year** ..... 1

**Local Area Hikes**.....2-4

**Visitor Centers** ..... 15

**Visitor Center Locations** ..... 16

**Mercer Slough Environmental Education Center:**

Family Discovery Series .....5-7

Summer Science Series ..... 7

Adult Enrichment Series ..... 7

**Lake Hills Greenbelt Ranger Station:**

Family Discovery Series ..... 8-10

**Lewis Creek Visitor Center:**

Family Discovery Series .....11-15

Adult Enrichment Series ..... 15





# Let us know how we're doing!

Bellevue Parks & Community Services wants to know how we can make our environmental education programs better. We invite you to give us feedback about programs you've attended and suggestions for future programs. You can do this two ways:

1. Ask for an evaluation card at a visitor's center that you can fill out on the spot, or
2. Simply send us an email at [program\\_feedback@bellevuewa.gov](mailto:program_feedback@bellevuewa.gov).

Any thoughts you have about our programs are welcome, but we're specifically wondering;

- Did the program you attended increase your knowledge of the natural world?
- Did the program you attended increase your respect for natural areas?
- What would the ideal length be for a ranger program?
- Do you prefer programs on animals, plants, ecosystems, natural resources, or something else?
- Do you/your family prefer programs outdoors/in parks or indoors with photos and videos?

Thank you for your help in shaping the future of our educational programs!








# Special Events

## BELLEVUE'S 2018 SPECIES OF THE YEAR

Each year, the Bellevue Master Naturalist corps features a native species that is local to our area. The Species of the Year for 2018 is the garter snake.

Look for this snake icon  next to program titles in this guide. These programs will feature information on garter snakes and snakes generally. Join us at all three visitor centers to explore what makes snakes so special, and how you can help conserve them right here in Bellevue!



# Local Area Hikes

Did you know Bellevue has almost 100 parks and over 90 miles of trail to explore? Get connected to your local greenbelts and neighborhood parks as rangers take you on hikes throughout the year. Dress for the weather, bring water and wear sturdy shoes. Hikes vary in theme and length. See details below. **Cost:** FREE! **Registration:** Not required. **Info:** 425-452-4195.

## RANGER-LED HIKE AT LEWIS CREEK PARK

Saturdays, May 5, June 2, July 7, August 4, 10:30 a.m.-12 p.m.

Join a Bellevue Park Ranger to explore the natural and cultural history of Lewis Creek Park. Look for signs of local wildlife and learn what to do when encountering animals in the wild. Please dress for the weather and wear sturdy shoes. No pre-registration or RSVP required.

**Distance:** approximately 1 mile.

**Level of Difficulty:** Easy  
(50 feet elevation change)

**Meeting Place:** *Lewis Creek Visitor Center, 5808 Lakemont Blvd SE*

## RANGER-LED "WOOF WALK" AT LAKEMONT COMMUNITY PARK

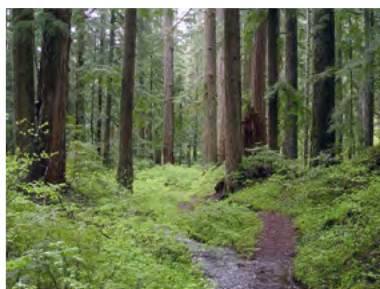
Sunday, May 13, 10 a.m.-12 p.m.

Come explore Lakemont Highlands Open Space with your furry friend and learn about the natural history and wildlife of the park and how we can keep our pets safe. Please limit one dog per guest with leash and bring a doggy waste bag. All ages are welcome. Please dress for the weather and wear sturdy shoes. No pre-registration or RSVP required.

**Distance:** 3.5 miles.

**Level of Difficulty:** Moderately Difficult  
(700 feet elevation change)

**Meeting Place:** *Lakemont Community Park  
5170 Village Park Dr SE*





## RANGER-LED HIKE AT LAKEMONT HIGHLANDS OPEN SPACE

Sunday, June 10, 10 a.m. – 12 p.m.

Join a Bellevue Park Ranger at the Lewis Creek Visitor Center to explore the Lakemont Highlands Open Space trail system. Please dress for the weather and wear sturdy shoes. No pre-registration or RSVP required.

**Distance:** 3.5 miles

**Level of difficulty:** Moderately Difficult (680 feet elevation change)

**Meeting Place:** *Lewis Creek Park Visitor Center, 5808 Lakemont Blvd SE*

## RANGER-LED HIKE AT COAL CREEK NATURAL AREA

Saturday, July 14, 10:30 a.m.-12 p.m.

Join a Bellevue Park Ranger at the Cinder Mine Trailhead to discover Bellevue's largest park and get lost in the wilderness while still in the city! This area is rich in history and wildlife. Please dress for the weather and wear sturdy shoes. No pre-registration or RSVP required.

**Distance:** 2 miles.

**Elevation Change:** Moderately Difficult (240 feet elevation change)

**Meeting Place:** *Cinder Mine Trailhead (Newcastle Golf Club Road, west of Redtown Trailhead)*

## RANGER-LED HIKE AT LAKEMONT COMMUNITY PARK

Sunday, August 12, 10:30 a.m. – 12 p.m.

This lovely trail winds alongside a creek as we ascend and descend throughout the park. Please dress for the weather and wear sturdy shoes. No pre-registration or RSVP required.

**Distance:** 2 miles

**Level of difficulty:** Moderately Difficult  
(700 feet elevation change)

**Meeting Place:** *Lakemont Community Park, 5170 Village Park Dr SE*





## MERCER SLOUGH RANGER WALKS

**Registration:** RSVP at 425-452-2565 or [mseec@bellevuewa.gov](mailto:mseec@bellevuewa.gov)

**Distance:** 1.5+ miles.

**Elevation Change:** Easy (30 feet elevation change)

**Meeting Place:** *Mercer Slough Environmental Education Center  
1625 118th Ave SE*

### Family Friendly Ranger Hikes:

Sundays, May 6, June 3, July 1, August 5, 2-3:30 p.m., rain or shine

Bring the whole family to join a Ranger on a guided hike through the Mercer Slough Nature Park. This kid-oriented program aims to educate kids and their parents about the Nature Park while discovering the birds and animals that call the Mercer Slough home. The hour-long nature walk ends at the channel bridge in the middle of the park. From there you can continue on to further explore the rich diversity the park has to offer.

### Private Group Ranger Walks:

Available some Sundays by appointment.

**Contact:** 425-452-2565 or [mseec@bellevuewa.gov](mailto:mseec@bellevuewa.gov)

### First-time Birder Walk (Eastside Audubon)

Sunday, May 12, 8-11 a.m.

**Contact:** Antonio Montañana, [amontanana@eastsideaudubon.org](mailto:amontanana@eastsideaudubon.org) to RSVP.

30 minutes of instruction and a 2-hour walk to look for birds. Trip leaders Lori and Antonio from Eastside Audubon will first cover topics such as birding etiquette, choosing and using binoculars, using field guides and birding apps. Once orientated, they will then lead the group on a birding trip through the park.

## RANGER-LED HIKE AT ROBINSWOOD PARK

Saturdays, May 12 & 26, June 9 & 30, July 14 & 21,  
August 2, 4 & 25, 2-3 p.m.

Come discover the local forests of Robinswood Park. A park ranger will lead this easy walk, introducing you to local trees, native wildlife, and natural history. Also learn what it means to have a forest in a park, and what you can do to protect it while enjoying your visit! You will find the park ranger ready to lead the hike at the "The Robinswood House" sign at 2 p.m. No pre-registration or RSVP required for groups under 8 persons.

**Meeting Place:** *Robinswood Park  
2430 148th Ave SE, Bellevue, WA 98007*







# MERCER SLOUGH

## ENVIRONMENTAL EDUCATION CENTER

*Mercer Slough Environmental Education Center, 1625 118 Avenue SE*

**Hours:** Daily, 10 a.m.-4 p.m. **Phone:** 425-452-2565

**Email:** [MSEEC@bellevuewa.gov](mailto:MSEEC@bellevuewa.gov)

*Overlooking the 320 acre Mercer Slough Nature Park, the Visitor Center offers remarkable view of the forest canopy and swampy wetlands below. Inside, enjoy an interactive library and interpretive displays for adults and families. Park Rangers provide information and free weekly programs. Pick up trail maps, brochures, and program information today.*

## Family Discovery Series

### MAMMALS OF MERCER SLOUGH

Saturday, May 19, 2-3 p.m.

It's FUR-real. Mercer Slough Nature Park provides critical habitat for both aquatic and terrestrial mammals. Have you ever been curious who might be living here, who may be just passing thru, or where they might be hiding? Join a Park Ranger to discover more about these mammals thru hands-on displays, crafts and activities. **Ages:** Best for children 5-10.

**Cost:** FREE! **Pre-Registration:** Required. **Info:** RSVP at 425-452-2565 or [mseec@bellevuewa.gov](mailto:mseec@bellevuewa.gov)

### LET'S HAVE SOME TREE TIME

Saturday, June 16, 2-3 p.m.

Did you know that trees provide half of the earth's oxygen? Join a park Ranger to get to the ROOT of tree facts. Enjoy an hour of games, activities and crafts both indoors and out. Learn what you can do to return the favor. **Ages:** Best for children 5-10.

**Cost:** FREE! **Pre-Registration:** Required.

**Info:** RSVP at 425-452-2565 or [mseec@bellevuewa.gov](mailto:mseec@bellevuewa.gov)





## BUTTERFLIES BEES AND BIRDS OH MY!

Saturday, July 21, 2-3 p.m.

Did you know that Hummingbirds flap their wings 80 times per second? And that butterflies and bees are perfect pollinators? Join a park Ranger to discover more fun facts about some of nature's greatest gifts, enjoy some crafts, and explore the trail. **Ages:** Best for children 5-10. **Cost:** FREE! **Pre-Registration:** Required. **Info:** RSVP at 425-452-2565 or [mseec@bellevuewa.gov](mailto:mseec@bellevuewa.gov)

## DRAGONFLIES: FEROCIOUS SKY HUNTERS

Saturday, August 18, 2-3 p.m.

Dragonflies are beautiful and intriguing to watch but did you know they are also ferocious predators? They can judge the speed and trajectory of their prey with such precision that they adjust their flight accordingly and ambush unsuspecting insect's mid-air. Join a Park Ranger for a fun filled hour to learn more about these aerial hunters. **Ages:** Best for children 5-10. **Cost:** FREE! **Pre-Registration:** Required. **Info:** RSVP at 425-452-2565 or [mseec@bellevuewa.gov](mailto:mseec@bellevuewa.gov)



## Movies

Featuring 4 Episodes from Planet Earth Series One. Popcorn provided!

### MOUNTAINS

Friday, May 25, 5-6 p.m.

The second instalment focuses on the mountains. All the main ranges are explored with extensive aerial photography.

**Ages:** All ages are welcome, best for 5+.

**Cost:** FREE! **Registration:** RSVP 425-452-2565 or [mseec@bellevuewa.gov](mailto:mseec@bellevuewa.gov).



### CAVES

Friday, June 29, 5-6 p.m.



This episode explores "Planet Earth's final frontier"—caves featuring the deepest gave with the depth of 1,300ft. Its volume could contain the Empire State Building. **Ages:** All ages are welcome, best for 5+. **Cost:** FREE! **Registration:** RSVP 425-452-2565 or [mseec@bellevuewa.gov](mailto:mseec@bellevuewa.gov).

## SHALLOW SEAS

Friday, July 27, 5-6 p.m.

This program is devoted to the shallow seas that fringe the world's continents. Although they constitute 8% of the oceans, they contain most marine life. **Ages:** All ages are welcome, best for 5+. **Cost:** FREE! **Registration:** RSVP 425-452-2565 or mseec@bellevuewa.gov.

## OCEAN DEEP

Friday, August 31, 5-6 p.m.

The final instalment concentrates on the least explored area of the planet—the deep ocean. The last sequence depicts the largest animal on Earth the blue whale of which 300,000 once roamed the world's oceans. Now fewer than 3% remain. **Ages:** All ages are welcome, best for 5+. **Cost:** FREE! **Registration:** RSVP 425-452-2565 or mseec@bellevuewa.gov.



# Summer Science Series

## WATER YOU KNOW

Fridays, July 6, August 3, 1-3 p.m.

Join a Park Ranger for this NEW summer pre-teen program to investigate the water of the Mercer Slough and to learn more about what factors influence the quality. This inquiry based program involves observation, critical thinking, and hands-on learning with chemical water testing kits to be used at various locations within the nature park. **Ages:** Best for children 10-13. **Cost:** FREE! **Pre-Registration:** Required.

**Info:** RSVP at 425-452-2565 or mseec@bellevuewa.gov

*\*Please come prepared to spend two hours outside and hike on uneven terrain. (day pack w/ water bottle, sunscreen, hat, bug spray)*



## Adult Enrichment Series

The Inside Story of Garter Snakes – From the San Juan Islands to Your Own Backyard. Local herpetologist Leonard Jones, Ph.D candidate in biology at University of Washington, Seattle, and lifelong snake enthusiast, will explain how researchers study these shy critters. Learn how scientists find out about preferred habitats, food preferences, and dangers of and to snakes. You will be surprised to learn the value of garter snakes in your garden and beyond as indicators of an ecosystem's health. Saturday, June 9, 11 a.m.-12 p.m.

**Pre-Registration:** RSVP at 425-452-2565 or mseec@bellevuewa.gov



Mercer Slough Environmental Education Center is a collaboration between the City of Bellevue and the Pacific Science Center. For information on programs provided by Pacific Science Center, please visit [www.pacificsciencecenter.org](http://www.pacificsciencecenter.org).







# LAKE HILLS GREENBELT

R A N G E R S T A T I O N

*Lake Hills Greenbelt Ranger Station, 15416 SE 16 Street*

**Hours:** Tuesday-Saturday, 12-4p.m. **Phone:** 425-452-7225

**Email:** [ParkRangerProgram@bellevuewa.gov](mailto:ParkRangerProgram@bellevuewa.gov)

*Surrounded by community farms, gardens, and beautiful wetlands, you will find interpretive displays, trails, environmental program information, and friendly Park Rangers to answer your questions.*

## Family Discovery Series

### GREAT BLUE HERONS

Friday, May 4, 10-11 a.m.

Did you know that Bellevue is home to a great blue heron rookery? These patient fishers can be seen all year round in our lakes and streams. Come learn about what makes a wetland such a magnificent home for these long-legged birds. **RSVP:** Required at 425-452-6993 or [JWandler@bellevuewa.gov](mailto:JWandler@bellevuewa.gov). Parents or legal guardians need to attend and RSVP with their child(ren).

**Ages:** All ages welcome. **Cost:** FREE!

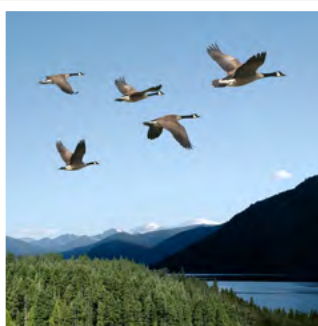


### MODES OF MIGRATION

Friday, May 18, 10-11 a.m.

Why do animals travel so far between seasons? Why do the snow geese head far north for the summer? From the hoary bat to the yellow warbler, peamouth minnow to the chinook salmon, we'll learn about some pretty amazing migratory animals at this event. **RSVP:** Required at 425-452-6993 or [JWandler@bellevuewa.gov](mailto:JWandler@bellevuewa.gov). Parents or legal guardians need to attend and RSVP with their child(ren).

**Ages:** All ages welcome. **Cost:** FREE!





## WHO'S IN YOUR BACKYARD: BIG ANIMALS

Friday, June 8, 10-11 a.m.

From black bears to mountain lions, the Pacific Northwest is home to quite a few big furry creatures. Come to the ranger station to learn what large animals live in and around Bellevue, and what to do if you are lucky enough to see them. **RSVP:** Required at 425-452-6993 or JWandler@bellevuewa.gov. Parents or legal guardians need to attend and RSVP with their child(ren). **Ages:** All ages welcome. **Cost:** FREE!



## THE SCIENCE SUNSHINE

Friday, June 22, 10-11 a.m.



The heat of the summer is arriving, which brings many changes to our natural areas. But how does the sun work, and why is it warm in the summer? Learn about these and many more questions in our Summer Science class! **RSVP:** Required at 425-452-6993 or JWandler@bellevuewa.gov. Parents or legal guardians need to attend and RSVP with their child(ren). **Ages:** All ages welcome. **Cost:** FREE!

## HOW TO BUILD-A-BACKPACK FOR YOUR HIKE

Friday, July 6, 10-11 a.m.

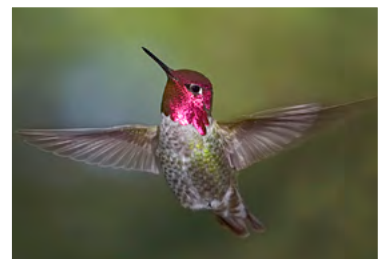
Washington State has a great many opportunities for outdoor adventures. Whether it's a day hike or an overnight camping trip, it's very important to be prepared! Learn how to prepare for a family outdoor adventure with your local Park Ranger. **RSVP:** Required at 425-452-6993 or JWandler@bellevuewa.gov. Parents or legal guardians need to attend and RSVP with their child(ren). **Ages:** All ages welcome. **Cost:** FREE!



## TINY BUZZING HUMMINGBIRDS

Friday, July 20, 10-11 a.m.

Watch them as they zoom from flower to flower looking for that sweet nectar. Our smallest bird is also one of our most interesting! Hummingbirds dart all around all through the summer, so come learn more about this amazing little bird! **RSVP:** Required at 425-452-6993 or JWandler@bellevuewa.gov. Parents or legal guardians need to attend and RSVP with their child(ren). **Ages:** All ages welcome. **Cost:** FREE!



## BUSY BUSY BEAVERS

Friday, August 17, 10-11 a.m.



The busy beaver is hard at work preparing a home for the winter. They dam the river, build a lodge, and even prepare an underwater ladder! Come learn how beavers build their warm home, and why they build their dams. **RSVP:** Required at 425-452-6993 or [JWandler@bellevuewa.gov](mailto:JWandler@bellevuewa.gov). Parents or legal guardians need to attend and RSVP with their child(ren). **Ages:** All ages welcome. **Cost:** FREE!

## CREATURES OF THE NIGHT

Friday, August 24, 8-9 p.m.

When darkness falls, nocturnal animals are just waking up! From bats to owls in the air, and raccoons to coyotes on the ground, the night is ever so active! Discover which of these creatures live in Bellevue, and come listen for them in a special ranger led night hike! **RSVP:** Required at 425-452-6993 or [JWandler@bellevuewa.gov](mailto:JWandler@bellevuewa.gov). Parents or legal guardians need to attend and RSVP with their child(ren). **Ages:** All ages welcome. **Cost:** FREE!







*Lewis Creek Visitor Center, 5808 Lakemont Blvd SE*

**Hours:** Wednesday - Sunday, 10 a.m.-4 p.m **Phone:** 425-452-4195

**Email:** [lcvc@bellevuewa.gov](mailto:lcvc@bellevuewa.gov)

*This beautiful park offers ample opportunity to wander through forests, meadows, and wetlands. Come inside the Visitor Center to pick up trail and park maps for the area, attend a Natural Resource program, or simply enjoy the relaxing atmosphere.*

## Family Discovery Series

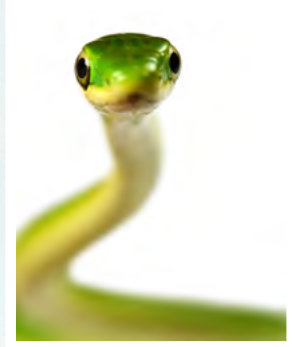
### COLD-BLOODED CHARMERS

Saturday, May 19, 2:30-3:30 p.m.



Ever wondered how snakes can “smell” with their tongues? Or “hear” using their jaw bones? Come learn about Bellevue’s cunning Northwestern Garter Snake, *Thamnophis ordinoides*, selected as Species of the Year for Bellevue Parks. Join the Master Naturalists for a presentation, sss-slithery game, and a sss-stealthy habitat walk around Lewis Creek Park. **Age:** Best for children ages 5+ with accompanying adult(s).

**Pre-registration:** RSVP required at 425-452-4195 or [LCVC@BellevueWA.gov](mailto:LCVC@BellevueWA.gov).



### CREEKSIDE CADDISFLIES

Saturday, May 12, 2:30-3:30 p.m.

Sunday, May 20, 2:30-3:30 p.m.

Have you seen a dragonfly nymph’s jaws snatch a tasty snack as it crawls along the creek bed, or a caddisfly snuggled up in its weaved case? Find out all about these critters and more as you explore Lewis Creek Park’s creek bed with a park ranger! Indoor/outdoor program.

**Ages:** Best for children ages 5-10 with accompanying adult(s).

**Registration:** No pre-registration or RSVP required.



## WILDERNESS TEA PARTY

Saturday, June 9, 10-11:30 a.m.

Sunday, July 22, 10-11:30 a.m.

Saturday, August 11, 10-11:30 a.m.

Join us for a tea party where you never know what new friends you'll make! Learn who lives in our forests and listen to the sounds of nature as we sip beneath the trees. Wear that dress or tie that you don't mind getting a bit dirty and sip on a selection of decaffeinated teas. Outdoor program. **Ages:** Best for children ages 4-7 with accompanying adult(s). **Pre-registration:** RSVP required at 425-452-4195 or [LCVC@BellevueWA.gov](mailto:LCVC@BellevueWA.gov).



## HIGH-FLYING HAWKS

Sunday, June 3, 2:30-3:30 p.m.

Saturday, June 30, 2:30-3:30 p.m.

Hawks can be found in almost any type of environment. Learn about the different raptor species that call Lewis Creek Park home before we head out on a hike to look for them. Indoor/outdoor program. **Ages:** Best for children ages 5-10 with accompanying adult(s). **Registration:** No pre-registration or RSVP required.



## BOBCATS AND BUNNIES

Sunday, July 15, 2:30-3:30 p.m.

Saturday, July 21, 2:30-3:30 p.m.

Did you know that Bellevue is home to bobcats and cougars? Come discover how our stealthy neighbors help keep the ecosystem balanced by playing a game of "bobcats and bunnies"! Indoor/outdoor program.

**Ages:** Best for children ages 5-10 with accompanying adult(s).

**Registration:** No pre-registration or RSVP required.



## FOREST FIRE TAG

Sunday, August 5, 2:30-3:30 p.m.

Saturday, August 18 & 25, 2:30-3:30 p.m.

Join a park ranger to learn about forest fires this month. We'll play some fun games to explore the science behind wildland fires, how trees protect themselves from fire, and even how some forests need fire to keep the ecosystem healthy. Indoor/outdoor program. **Ages:** Best for children ages 5-10 with accompanying adult(s).

**Registration:** No pre-registration or RSVP required.



## BATTY NIGHTS AT LEWIS CREEK PARK

Friday, May 18, 8:30-10 p.m.

Friday, August 24, 7:30-9 p.m.

Come test your echolocation out with a Park Ranger. We'll learn all about our Northwestern bat species before taking a dusk hike to watch for bats as they leave their roosting sites to forage for insects! Bring a flashlight or headlamp, as well as sturdy shoes for the journey! Indoor/Outdoor program. **Ages:** Best for children ages 5+ with accompanying adult(s).

**Pre-registration:** Required for youth and adult participants at <https://register.bellevuewa.gov>.

## A MIDSUMMER EVE'S HIKE

Friday, July 20, 8:30-10 p.m.

You may have heard about diurnal and nocturnal animals, but when dusk takes over crepuscular species rule the evening! Find out more about the crepuscular species that call Bellevue home, and join a Park Ranger on an evening hike through the park! Bring a flashlight or headlamp, as well as sturdy shoes for the journey. Preregistration is required for youth and adult participants. Indoor/outdoor program. **Ages:** Best for children ages 5-10 with accompanying adult(s). **Pre-registration:** Required for youth and adult participants at <https://register.bellevuewa.gov>.



# Story Time

Look, listen and create during an hour of stories and crafts with a park ranger on the 1st Friday of every month. Parents and children will explore together the diverse animal world with animated fiction and fun.

Lewis Creek Park Visitor Center, 5808 Lakemont Blvd SE.

## THE SECRET PLACE

Friday, May 4, 11 a.m.-12 p.m. OR 1:30-2:30 p.m.

Look, listen, and create during an hour of stories and crafts! Hiding in our cities are places where wildlife thrives. Come join us as we read about finding the special places in the city around you. We always make a fun craft to take home! **Ages:** Best for ages 3-7 with accompanying adult. **Pre-registration:** RSVP required at 425-452-4195 or LCVCA@BellevueWA.gov. **Cost:** Free.

## BAT LOVES THE NIGHT

Friday, June 1, 11 a.m.-12 p.m. OR 1:30-2:30 p.m.

Look, listen, and create during an hour of stories and crafts! Did you know that a pipistrelle bat can eat over three thousand insects a night? During this story time, we'll fly with Bat and explore the night like never before. We always make a fun craft to take home! **Ages:** Best for ages 3-7 with accompanying adult. **Pre-registration:** RSVP required at 425-452-4195 or LCVCA@BellevueWA.gov. **Cost:** Free.

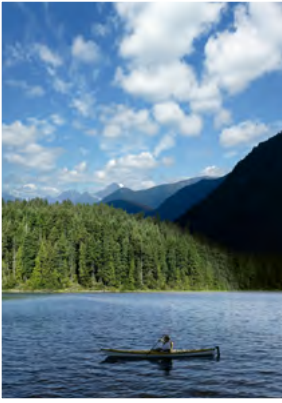


## OVER AND UNDER THE POND

Friday, July 6, 11 a.m.-12 p.m. OR 1:30-2:30 p.m.

Look, listen, and create during an hour of stories and crafts! Have you ever wondered what is happening beneath the water's glossy surface? To find out, we'll be reading two books to find out about the animals around a pond and about one special creature that spends part of its life under the pond before emerging. We always make a fun craft to take home! **Ages:** Best for ages 3-7 with accompanying adult. **Pre-registration:** RSVP required at 425-452-4195 or LCVCA@BellevueWA.gov. **Cost:** Free.





## VOICES OF THE WILD

Friday, August 3, 11 a.m.-12 p.m. OR 1:30-2:30 p.m.

Look, listen, and create during an hour of stories and crafts! Ride along with a kayaker as he discovers that every animal around him has its own story. We always make a fun craft to take home! **Ages:** Best for ages 3-7 with accompanying adult. **Pre-registration:** RSVP required at 425-452-4195 or [LCVC@BellevueWA.gov](mailto:LCVC@BellevueWA.gov). **Cost:** Free.

## Adult Enrichment Series

### Living with Wildlife Series

#### RACCOONS

Sunday, May 6, 2-3 p.m.

Are you neighbors with one (or a several) of these mischievous mammals? If so, you're not alone. Learn all about raccoons, as well as how to prevent conflicts in your neighborhood.

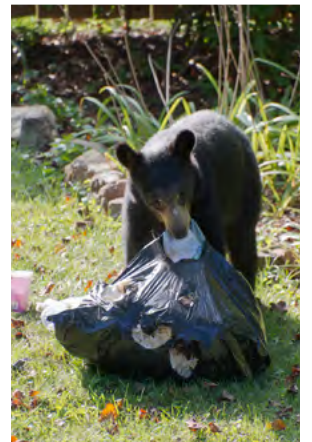
**Ages:** This program is best for adults, but participants ages 13+ are welcome with accompanying adult(s). **Registration:** No pre-registration or RSVP required.



#### THERE'S A BEAR IN THE YARD!

Saturday, June 16, 2-3 p.m.

Springtime in south Bellevue means roaming bears. Learn all about black bears in our area...including how to prevent conflicts in your neighborhood, and what to do if you see one. **Ages:** This program is best for adults, but participants ages 13+ are welcome with accompanying adult(s). **Registration:** No pre-registration or RSVP required.



#### BACKYARD BATS

Sunday, July 8, 2-3 p.m.

Washington is home to 15 species of bats! Every fall these bats find a place to hibernate, hopefully avoiding human structures in their search. Find out which species live in Bellevue and how to prevent your home from becoming a bat cave! **Ages:** This program is best for adults, but participants ages 13+ are welcome with accompanying adult(s). **Registration:** No pre-registration or RSVP required.

# VISITOR CENTERS

---



***Mercer Slough Environmental  
Education Center***

*425-452-2565  
1625 118 Avenue SE*



***Lake Hills Greenbelt  
Ranger Station***

*425-452-7225  
15416 SE 16 Street  
(15500 SE 16 Street:  
Parking Location)*

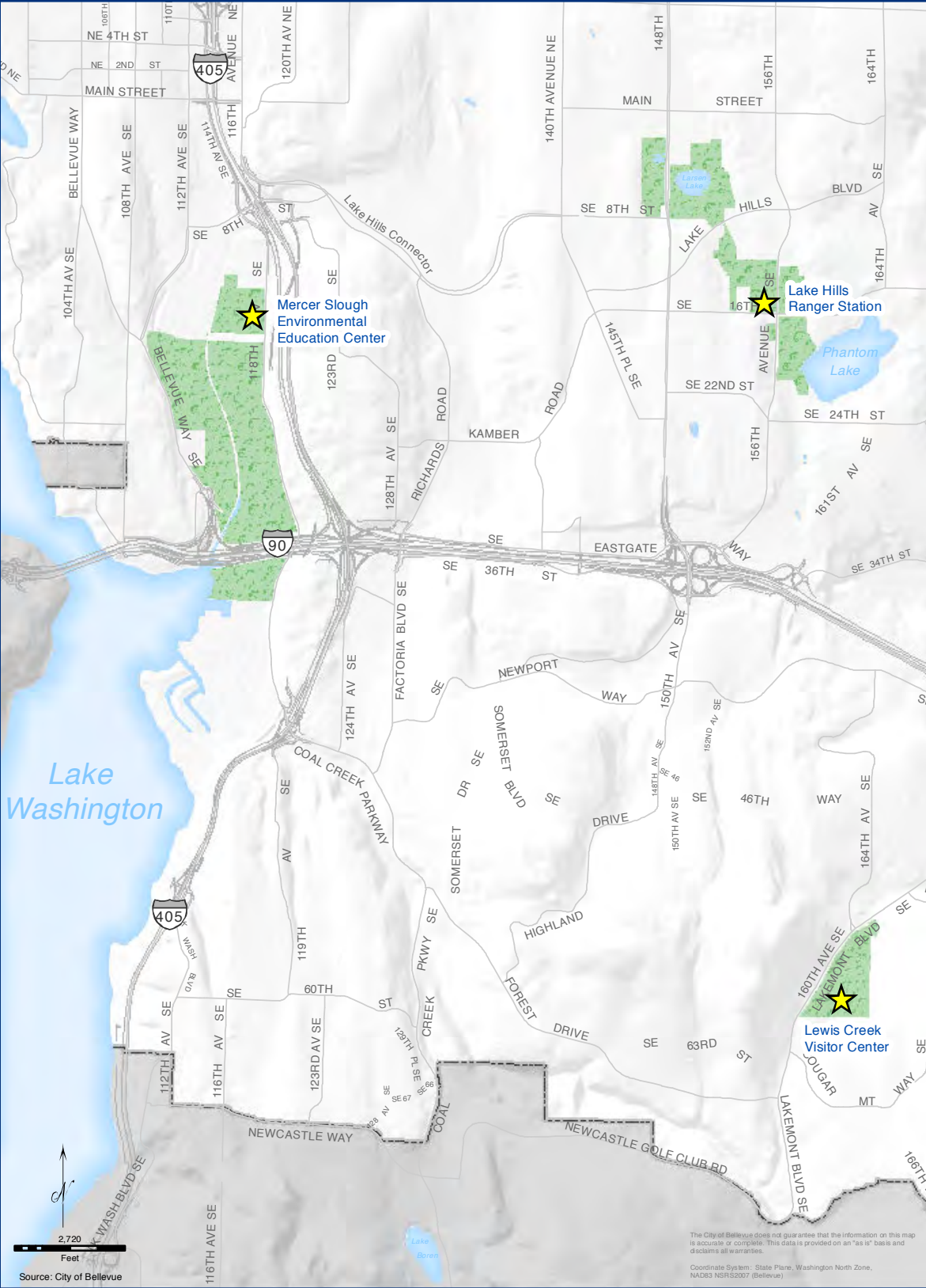


***Lewis Creek Visitor Center***

*425-452-4195  
5808 Lakemont Blvd SE*



# VISITOR CENTER LOCATIONS



## Mercer Slough Environmental Education Center

425-452-2565

1625 118 Avenue SE

## Lake Hills Greenbelt Ranger Station

425-452-7225

15416 SE 16 Street

15500 SE 16 Street: Parking Location

## Lewis Creek Visitor Center

425-452-4195

5808 Lakemont Blvd SE



## ***Bellevue Parks & Community Services***



Wheelchair accessible. Captioning, American Sign Language (ASL), or language interpreters are available upon request. Please phone at least 48 hours in advance 425-452-5379 (Voice). If you are deaf or hard of hearing, dial 711 (TR). Assisted listening device is available upon request.

