



2019

Summer
May-August

NATURAL RESOURCE PROGRAMS

Mercer Slough Environmental Education Center

Lake Hills Greenbelt Ranger Station

Lewis Creek Visitor Center



Bellevue Parks &
Community Services

Natural Resource Division



Table of Contents

Special Events..... 1

Local Area Hikes.....2

Mercer Slough Environmental Education Center6

Lake Hills Greenbelt Ranger Station..... 10

Lewis Creek Visitor Center 13

Visitor Centers 19

Visitor Center Locations20





Let us know how we're doing!

Bellevue Parks & Community Services wants to know how we can make our environmental education programs better. We invite you to give us feedback about programs you've attended and suggestions for future programs. You can do this two ways:

1. Ask for an evaluation card at a visitor's center that you can fill out on the spot, OR
2. Simply send us an email at program_feedback@bellevuewa.gov

Any thoughts you have about our programs are welcome, but we're specifically wondering;

- Did the program you attended increase your knowledge of the natural world?
- Did the program you attended increase your respect for natural areas?
- What would the ideal length be for a ranger program?
- Do you prefer programs on animals, plants, ecosystems, natural resources, or something else?
- Do you/your family prefer programs outdoors/in parks or indoors with photos and videos?

Thank you for your help in shaping the future of our educational programs!



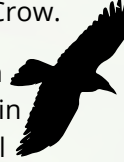


Special Events

BELLEVUE'S 2019 SPECIES OF THE YEAR

Each year, the Bellevue Master Naturalist corps features a native species that is local to our area. The Species of the Year for 2019 is the American Crow.

Look for this crow icon next to program titles in this guide. Join us at all three visitor centers to learn what makes crows so special, and how Bellevue residents can keep up a good relationship with these fascinating birds.



WORLD MIGRATORY BIRD DAY BASH

Saturday, May 11, 8-10 a.m.

Larsen Lake Blueberry Farm, 700 148th Avenue SE



Each year over 81 countries all over the globe come together to celebrate our wonderful migratory birds during World Migratory Bird Day. Flock to the park to celebrate this very special event where park rangers will be leading drop-in programs throughout the morning where you can browse for birds during a ranger-led hike, fly through the dangers of migration during a fun migration game, and create crafts for bird friendly

communities. **Age:** This jubilee is fun for all ages.

No pre-registration or RSVP required. Outdoor Program.

Local Area Hikes

RANGER-LED HIKE AT LEWIS CREEK PARK

First Saturday of each month, 10:30-11:30 a.m.

Saturdays, May 4, June 1, July 6, August 3

Join a Bellevue Park Ranger to explore the natural and cultural history of Lewis Creek Park. Look for signs of local wildlife and learn what to do when encountering animals in the wild. Please dress for the weather and wear sturdy shoes. For groups of 10 or more please call. **No pre-registration or RSVP required.**

Distance: 1 mile.

Level of Difficulty: Easy (50 feet elevation change)

Meeting Place: Lewis Creek Park Visitor Center,
5808 Lakemont Blvd SE



RANGER-LED HIKE AT LAKEMONT HIGHLANDS OPEN SPACE

Sunday, May 26, 10 a.m.-12 p.m.

Join a Bellevue Park Ranger at the Lewis Creek Visitor Center to explore the Lakemont Highlands Open Space trail system. Please dress for the weather and wear sturdy shoes. For groups of 10 or more please call. **No pre-registration or RSVP required.**

Distance: 3.5 miles.

Level of Difficulty: Moderately Difficult (680 feet elevation change)

Meeting Place: Lewis Creek Park Visitor Center,
5808 Lakemont Blvd SE

RANGER-LED HIKE AT LAKEMONT COMMUNITY PARK

Sunday, June 23, 10:30 a.m.-12 p.m.

This lovely trail winds alongside a creek as we ascend and descend throughout the park. Please dress for the weather and wear sturdy shoes. For groups of 10 or more please call. **No pre-registration or RSVP required.**

Distance: 2 miles.

Level of Difficulty: Moderately Difficult (700 feet elevation change)

Meeting Place: Lakemont Community Park, 5170 Village Park Dr SE



RANGER-LED HIKE AT COAL CREEK NATURAL AREA

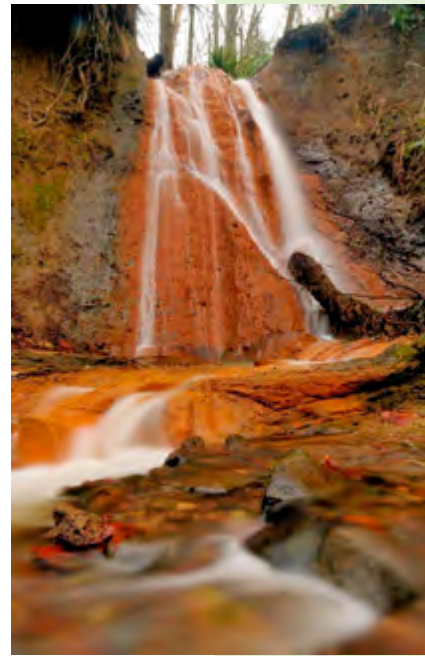
Sunday, July 14, 10:30 a.m.-12 p.m.

Explore Coal Creek at the Cinder Mine Trailhead to discover Bellevue's largest park and get lost in the wilderness while still in the city! This area is rich in history and wildlife you'll learn about while being guided by a Bellevue Park Ranger. Please dress for the weather and wear sturdy shoes. For groups of 10 or more please call. **No pre-registration or RSVP required.**

Distance: 2 miles.

Level of Difficulty: Moderately Difficult (240 feet elevation change)

Meeting Place: Cinder Mine Trailhead (Newcastle Golf Club Road, west of Redtown Trailhead)



RANGER-LED HIKE AT LAKEMONT COMMUNITY PARK

Saturday, August 31, 10:30 a.m.-12 p.m.

This lovely trail winds alongside a creek as we ascend and descend throughout the park. Please dress for the weather and wear sturdy shoes. For groups of 10 or more please call. **No pre-registration or RSVP required.**

Distance: 2 miles.

Level of Difficulty: Moderately Difficult (700 feet elevation change)

Meeting Place: Meets at Lakemont Community Park
5170 Village Park Dr SE



MERCER SLOUGH RANGER WALKS

Family Ranger Hike

Sundays, May 5, June 2, July 7, August 4, 2-3:30 p.m. Rain or Shine

Bring the whole family to join a Ranger on a guided hike through the Mercer Slough Nature Park. This kid-oriented program aims to educate kids and their parents about the Nature Park while discovering the birds and animals that call the Mercer Slough home. The hour-long nature walk ends at the channel bridge in the middle of the park. From there you can continue to further explore the rich diversity the park has to offer.

Distance: 1.5+ miles.

Level of Difficulty: Easy (30 feet elevation change)

Meeting Place: Mercer Slough Environmental Education Center
1625 118th Ave SE

Registration: RSVP at 425-452-2565 or mseec@bellevuewa.gov

Mercer Slough Private Group Ranger Walks:

Available some Sundays by appointment.

Contact: 425-452-2565 or mseec@bellevuewa.gov

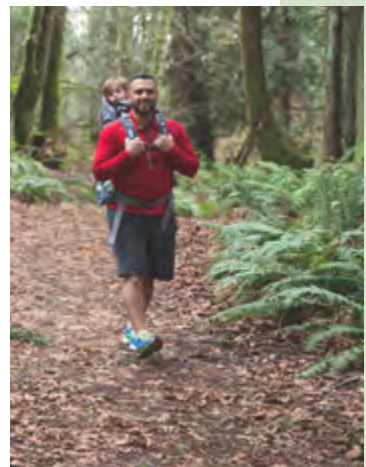
LAKE HILLS GREENBELT RANGER WALKS

Every Saturday, 2-3 p.m.

Join us Saturdays for an interpretive tour of the Lake Hills Greenbelt. We will depart from the Lake Hills Ranger Station for a 1-hour trek. We will talk about some local history and see native plants and wildlife that calls Bellevue home. As our tour concludes, you may continue on your own as the trail loops Larson Lake park. Bring your friends and family along for this free, weekly hike led by one of your local Bellevue Park Rangers. **All ages.**

Meeting Place: Lake Hills Greenbelt Ranger Station, 15416 SE 16th St.

RSVP: Please call 425-452-6993 24 hours in for groups larger than 10.



HIKE WITH A NATURALIST

Saturdays, June 8 & 22, July 13 & 27, August 10 & 24, 10-11 a.m.

Come discover the local forests of Robinswood Park. A naturalist will lead this easy walk, introducing you to local trees, native wildlife, and natural history. Also learn what it means to have a forest in a park, and what you can do to protect it while enjoying your visit! You will find the naturalist ready to lead the hike at the "The Robinswood House" sign at 10 a.m. **Please call 24 hours in advance to preregister for this program. All ages.**

Meeting Place: Robinswood Park

RSVP: Please call 425-452-6993 24 hours in advance.





MERCER SLOUGH

ENVIRONMENTAL EDUCATION CENTER

Mercer Slough Environmental Education Center, 1625 118 Avenue SE

Hours: Daily, 10 a.m.-4 p.m. **Phone:** 425-452-2565

Email: MSEEC@bellevuewa.gov

Overlooking the 320 acre Mercer Slough Nature Park, the Visitor Center offers remarkable view of the forest canopy and swampy wetlands below. Inside, enjoy an interactive library and interpretive displays for adults and families. Park Rangers provide information and free weekly programs.

Pick up trail maps, brochures, and program information today.

Programs

STORY AND A STROLL: WHEN RAIN FALLS

Friday, May 17, 11 a.m.-12 p.m.

When rain falls, we scurry indoors. But what about all those animals in the forests and fields? Journey from your neighborhood to the woods and wetlands of the Mercer Slough after enjoying this engaging story of animal habitats. **Ages:** Best for Ages 3-6yrs old.

RSVP: 425-452-2565 or mseec@bellevuewa.gov



MOVIE AT MERCER SLOUGH: WINGED MIGRATION

Friday, May 31, 5-6 p.m.

Enjoy the natural world as you fly along with some of the world's most amazing birds. This awe-inspiring film takes you to 40 different countries on each of the seven continents to capture a wide variety of bird migrations. Together the team of experts, cinematographers, and pilots lead you on a rare journey to follow these birds from a variety of unique perspectives. **Ages:** All ages are welcome but best for 5 and up. **Cost:** FREE! **RSVP:** 425-452-2565 or mseec@bellevuewa.gov.

RANGER PROGRAM: WHO LET THE BUGS OUT?

Saturday, June 8, 2-3 p.m.

We can find insects in almost every habitat, yet insects are underappreciated for their role in the food web. Without insects to help break down and dispose of wastes, dead animals and plants would accumulate in our environment. Other animals rely on insects as their primary food source. Without them they would starve. Join a Park Ranger for a nature walk in search of bugs. Enjoy some hands-on activities and crafts as well.

Ages: Best for children 5-10 yrs. **Cost:** FREE!

RSVP: 425-452-2565 or msee@bellevuewa.gov.



STORY AND A STROLL: A LOG'S LIFE

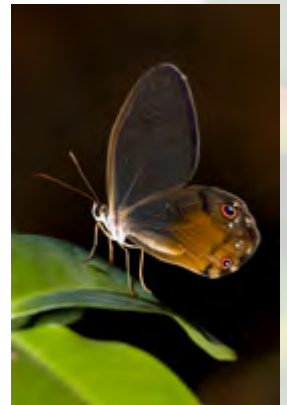
Friday, June 21, 11 a.m.-12 p.m.

This book introduces young readers to the life cycle of a tree inspiring them to look at logs in their own backyards. After the story, head out with a Park Ranger to investigate some fallen logs on the forest floor of the Mercer Slough Nature Park. **Ages:** Best for Ages 3-6yrs old
RSVP: 425-452-2565 or msee@bellevuewa.gov.

MOVIE: LEARNING TO SEE THE WORLD OF INSECTS

Friday, June 28, 5-6 p.m.

Insects are everywhere. They are by far the most common animals on our planet. In fact, more than 1.5 million species have been named. Yet there are many more to be discovered. Enjoy one man's transformational journey as he immerses himself into the world of the Amazons strangest creatures. **Ages:** All ages are welcome but best for 5 and up **Cost:** FREE! **RSVP:** 425-452-2565 or msee@bellevuewa.gov.



SUMMER SCIENCE: WATER YOU KNOW

Sunday, June 30, 2-3 p.m.



Join a Park Ranger for this NEW summer pre-teen program to investigate the water of the Mercer Slough and to learn more about what factors influence the quality. This inquiry-based program involves observation, critical thinking, and hands-on learning with chemical water testing kits to be used at various locations within the nature park. **Ages:** Best for children 10-13yrs old. **Cost:** FREE! **Pre-registration required:** RSVP at 425-452-2565 or msee@bellevuewa.gov

RANGER PROGRAM: EAT OR BE EATEN

Saturday, July 13, 2-3 p.m.



Predator and Prey relationships are essential to creating a healthy and balanced ecosystem. The Mercer Slough Nature Park is home to many creatures both predator and prey. Join a Park Ranger to learn more about these critical interactions and enjoy some fun activities and crafts. **Ages:** Best for children 5-10 yrs. **Cost:** FREE! **RSVP:** 425-452-2565 or mseec@bellevuewa.gov.

STORY AND A STROLL: UNDER ONE ROCK

Friday, July 19, 11 a.m.-12 p.m.

Have you ever peeked under a rock? A whole community of creatures lives there! One of the world's most fascinating habitats is right at your feet. After the story, venture out with a park Ranger to uncover some rocks and investigate these hidden creatures.

Ages: Best for Ages 3-6yrs old. **RSVP:** 425-452-2565 or mseec@bellevuewa.gov.

MOVIE: CLASH ENCOUNTERS OF BEARS AND WOLVES

Friday, July 26, 5-6 p.m.

In this documentary the grizzly and the wolf, two fierce competitors, test their strategies for survival. In a complex and vast region such as Yellowstone National Park where predators, scavengers and opportunists fight to survive, each one plays a vital role. **Ages:** All ages are welcome but best for 5 and up. **Cost:** FREE! **RSVP:** 4425-452-2565 or mseec@bellevuewa.gov.



RANGER PROGRAM: PERFECT POLLINATORS

Saturday, August 10, 2-3 p.m.

Pollination is not just fascinating, it is an essential ecological function. Over 80% of the world's flowering plants require a pollinator to reproduce. Unfortunately, we are witnessing a significant decline in our natural pollinator populations. Without these pollinators, humans will not survive, and terrestrial ecosystems will continue to deteriorate. Join a Park Ranger to learn more

about what we can do to protect our future of food. **Ages:** Best for children 5-10 yrs. **Cost:** FREE! **RSVP:** 425-452-2565 or mseec@bellevuewa.gov.



STORY AND A STROLL: A SECRET PLACE

Friday, August 16, 11 a.m.-12 p.m.

In the heart of the City, there is a special place. A place for wildlife to call home. This story immerses young readers into a hidden habitat. A place you may even have just outside your front door. The Mercer Slough Nature Park is one of those places. Join a Park Ranger to explore a little bit of nature in our urban areas. **Ages:** Best for Ages 3-6yrs old. **RSVP:** 425-452-2565 or msee@bellevuewa.gov.

MOVIE: BEES: TALES FROM THE HIVE

Friday, August 30, 5-6 p.m.

Honeybees have been mysteriously disappearing across the planet at alarming rates in the past decade or more. This phenomenon is referred to a Colony Collapse disorder. (CCD) While endless hours and years of research has been dedicated to solving this mystery, a definitive answer has not been found. Come and learn more about what may be leading to their demise, what it means for our future, and what we can do to help save the bees. **Ages:** All ages are welcome but best for 5 and up. **Cost:** FREE! **RSVP:** 425-452-2565 or msee@bellevuewa.gov.



Mercer Slough Environmental Education Center is a collaboration between the City of Bellevue and the Pacific Science Center. For information on programs provided by Pacific Science Center, please visit www.pacificsciencecenter.org.





LAKE HILLS GREENBELT

R A N G E R S T A T I O N

Lake Hills Greenbelt Ranger Station, 15416 SE 16 Street

Hours: Tuesday-Saturday, 12-4p.m. **Phone:** 425-452-6993

Email: ParkRangerProgram@bellevuewa.gov

Surrounded by community farms, gardens, and beautiful wetlands, you will find interpretive displays, trails, environmental program information, and friendly Park Rangers to answer your questions.

Programs

SENSATIONAL SQUIRRELS!

Friday, May 10, 10-11a.m.



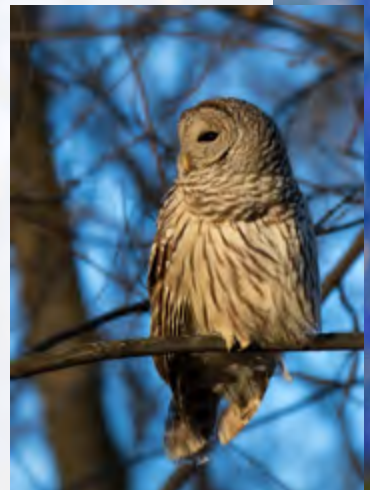
Who knew such a small animal could have such a big personality? As one of the area's most commonly-observed critters, the squirrel evokes many different emotions in those who come across them. We'll discuss the species present in our forests and backyards, and learn all about this adaptive animal. Join us for a fun time and a craft!

Age: Best for ages 3-7 with accompanying adult(s). **RSVP required** for children and adults by 4 p.m. the day before the program at 425-452-6993 or parkrangerprogram@bellevuewa.gov. Indoor/outdoor program.

EVENING WILDLIFE: AN OWL PROWL!

Friday, May 25, 8:30-9:30 p.m.

When darkness falls, nocturnal animals are just waking up! From bats to owls in the air, and raccoons to coyotes on the ground, the night is ever so active! Discover which of these creatures live in Bellevue and come listen for them in a special ranger led night hike! **Age:** Best for ages 3-7 with accompanying adult(s). **RSVP required** for children and adults by 4 p.m. the day before the program at 425-452-6993 or parkrangerprogram@bellevuewa.gov. Indoor/outdoor program.



ALL ABOUT AMPHIBIANS

Friday, June 7, 10-11a.m.



Ribbit! Ever wonder more about the incredible chorus of frogs heard on warm evenings, or maybe even the sleek salamanders that find refuge under logs and leaves? Learn all you need to know about the amphibians that inhabit our natural spaces, take home a fun craft, and head out on a park ranger-led walk for a chance to spy a few! **Age:** Best for ages 3-7 with accompanying adult(s). **RSVP required** for children and adults by 4 p.m. the day before the program at 425-452-6993 or parkrangerprogram@bellevuewa.gov. Indoor/outdoor program.

EVENING WILDLIFE: GREAT BLUE HERONS

Saturday, June 29, 7-8 p.m.

Did you know that Bellevue has been home to a great blue heron rookery? These patient fishers can be seen all year round in our lakes and streams. Come learn about what makes a wetland such a magnificent home for these long-legged birds. **Age:** Best for ages 3-7 with accompanying adult(s). **RSVP required** for children and adults by 4 p.m. the day before the program at 425-452-6993 or parkrangerprogram@bellevuewa.gov. Indoor/outdoor program.



WHAT'S IN THE WATER?

Friday, July 12, 10-11a.m.

Our region is known for its mild, damp conditions, creating the perfect pond habitats for a multitude of creatures, from dragonflies to tadpoles. Join a park ranger for a closer look into the water at the critters that call these ponds home, and learn more about their fascinating (and often strange) lives by seeing them firsthand! **Age:** Best for ages 3-7 with accompanying adult(s). **RSVP required** for children and adults by 4 p.m. the day before the program at 425-452-6993 or parkrangerprogram@bellevuewa.gov. Indoor/outdoor program.

EVENING WILDLIFE: BUSY BUSY BEAVERS

Saturday, July 27, 7-8 p.m.



The busy beaver is hard at work preparing a home for the winter. They Dam the river, build a lodge, and ever prepare an underwater ladder! Come learn how beavers build their warm home, and why they build their dams. **Age:** Best for ages 3-7 with accompanying adult(s). **RSVP required** for children and adults by 4 p.m. the day before the program at 425-452-6993 or parkrangerprogram@bellevuewa.gov. Indoor/outdoor program.

BIRD BRAINS: THE AMERICAN CROW

Friday, August 23, 10-11 a.m.

Although cultures around the world may regard the crow as a scavenger, bad omen, or simply a nuisance, this bad reputation might overshadow what could be regarded as the crow's most striking characteristic – its intelligence. Come join us for an educational program on our local bird brains, and enjoy a crow craft afterward. **Age:** Best for ages 3-7 with accompanying adult(s). **RSVP required** for children and adults by 4 p.m. the day before the program at 425-452-6993 or parkrangerprogram@bellevuewa.gov. Indoor/outdoor program.



EVENING WILDLIFE: AN OWL PROWL!

Saturday, August 31, 8:30-9:30 p.m.

When darkness falls, nocturnal animals are just waking up! From bats to owls in the air, and raccoons to coyotes on the ground, the night is ever so active! Discover which of these creatures live in Bellevue and come listen for them in a special ranger led night hike! **Age:** Best for ages 3-7 with accompanying adult(s). **RSVP required** for children and adults by 4 p.m. the day before the program at 425-452-6993 or parkrangerprogram@bellevuewa.gov. Indoor/outdoor program.





LEWIS CREEK

VISITOR CENTER

Lewis Creek Visitor Center, 5808 Lakemont Blvd SE

Hours: Wednesday - Sunday, 10 a.m.-4 p.m **Phone:** 425-452-4195

Email: lcvc@bellevuewa.gov

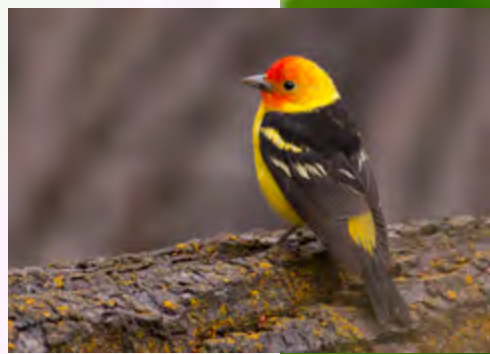
This beautiful park offers ample opportunity to wander through forests, meadows, and wetlands. Come inside the Visitor Center to pick up trail and park maps for the area, attend a Natural Resource program, or simply enjoy the relaxing atmosphere.

Programs

LEWIS CREEK STORY TIME: FEATHERED FRIENDS

Friday, May 3, choose one of two sessions
11 a.m.-noon OR 1:30-2:30 p.m.

Look, listen, and create during an hour of stories and crafts! Flock together for May's story time as we read two fun books. We'll learn all the different shapes, sizes, and colors birds come in before taking a closer look as a family of chicks grow up and discover the world. **Age:** Best for ages 3-7 with accompanying adult(s). **RSVP required** for children and adults by 4 p.m. the day before the program at 425-452-4195 or lcvc@bellevuewa.gov. Indoor program.



WHO'S THAT BIRD?

Sunday, May 5, 2:30-3:30 p.m.

Saturday, May 25, 2:30-3:30 p.m.



Fly in this month to learn the who's who and what's what of our local bird species. We'll learn some new friends, and participants will choose their favorite for an art piece to be displayed at the Lewis Creek Visitor Center. **Age:** Best for children ages 5-10 with accompanying adult(s). **No pre-registration or RSVP required.** Indoor/outdoor program.

TODDLER TRAILS

Friday, May 10, 10-11 a.m.
Friday, June 28, 10-11 a.m.
Friday, July 12, 10-11 a.m.
Friday, August 9, 10-11 a.m.

Explore the trails at Lewis Creek Park with a park ranger and get out some wiggles on select Fridays this summer. We'll take frequent stops while we investigate the different environments of Lewis Creek Park we wander through and learn how we can make hiking fun for everyone. Please dress for the weather and wear sturdy shoes. **Age:** Best for children ages 18 months-3 years with accompanying adult(s). This hike's difficulty is rated as easy (.5 miles). **RSVP required** for children and adults by 4 p.m. the day before the program at 425-452-4195 or lcvc@bellevuewa.gov. Outdoor program.



CREEKSIDE CADDISFLIES

Sunday, May 12, 2-3p.m.

Have you seen a dragonfly nymph's jaws snatch a tasty snack as it crawls along the creek bed, or a caddisfly snuggled up in its weaved case? Find out all about these critters and what they tell us about Lewis Creek as we take samples and dive deeper into what we find! Please dress for the weather and wear cloths you don't mind getting a bit wet. **Age:** Best for children ages 9-13 with accompanying adult(s). **RSVP required** for youth and adult participants by 4:00 p.m. the Friday before the program at 425-452-4195. Indoor/outdoor program.

BATTY NIGHTS AT LEWIS CREEK PARK

Friday, May 17, 8-9:30 p.m., Program Code 1902082
Friday, July 19, 8:30-10 p.m., Program Code 1902083
Friday, August 23, 7:30-9 p.m., Program Code 1902084

Come test your echolocation out with a Park Ranger. We'll learn all about our Northwest bat species before taking a dusk hike to watch for bats as they leave their roosting sites to forage for insects! Bring a flashlight or headlamp, as well as sturdy shoes for the journey!

Age: Best for children ages 5+ with accompanying adult(s). Indoor/outdoor program. **Preregistration is required** for youth and adult participants at Register.BellevueWA.gov.



AMERICAN CROW: THE "FEATHERED APE"?

Saturday, May 18, 2:30-3:30 p.m.



Do crows "talk" to each other? Can they distinguish peoples' faces? Where can you see a nightly "river of crows"? Learn about the surprisingly smart American Crow, selected as Species of the Year for Bellevue Parks. Join the Master Naturalists for a slideshow, activity or game, and a crow-inspired habitat walk around Lewis Creek Park. **Age:** Best for children ages 5-10 with accompanying adult(s). **RSVP**

required for children and adult participants by 4p.m. the Friday before the program at 425-452-4195. Indoor/outdoor program.

LIVING WITH WILDLIFE: CROUCHING BOBCATS

Sunday, May 19, 2-3 p.m.

How can you tell the difference between a bobcat, cougar, and a housecat? Bobcats are reclusive and sneaky, but sometimes we're lucky enough to see them! Find out how to recognize these short-tailed cats and how we can coexist with our shy neighbors. **Age:** This program is best for adults. **No pre-registration or RSVP required.** Indoor program.



LEWIS CREEK STORY TIME: BEAUTIFUL BUZZING BEES

Friday, June 7, choose one of two sessions
11 a.m.-noon OR 1:30-2:30 p.m.

Look, listen, and create during an hour of stories and crafts! When Mason meets a native bee for the first time he learns why they're amazing and that bees need his help! Discover how you can be a bee's superhero too just in time for National Pollinator Week. **Age:** Best for ages 3-7 with accompanying adult(s). **RSVP required** for children and adults by 4 p.m. the day before the program at 425-452-4195 or lcvc@bellevuewa.gov. Indoor program.



FROG HOP!

Saturday, June 8, 2:30-3:30 p.m.

Sunday, June 30, 2:30-3:30 p.m.



One of the earliest sounds of spring is the constant ribbit song of frogs. Learn about the amazing life cycle of these amphibians, as well as the kinds of frogs that live in Western Washington. Then join a park ranger to explore Lewis Creek using your ears to guide the way. **Age:** Best for children ages 5-10 with accompanying adult(s). **No pre-registration or RSVP required.** Indoor/outdoor program.

EVENING NATURE WALK

Friday, June 14, 8:30-10 p.m.

Join a Bellevue Park Ranger for a (grown-ups only) hike where we'll explore some of the park's nocturnal species, as well as strategies for seeing these shy animals at night. Please bring a flashlight or headlamp, dress for the weather, and wear sturdy shoes. This hike's difficulty is rated as easy (1 mile with approximately 50 ft elevation change). **Age:** This program is for adults. **Preregistration is required** for participants at register.BellevueWA.gov. Outdoor program.

LEWIS CREEK STORY TIME: THE HIDING TREE

Friday, July 5, choose one of two sessions

11 a.m.-noon OR 1:30-2:30 p.m.

Look, listen, and create during an hour of stories and crafts! Dive in for a closer look at the role trees play in hiding all sorts of forest critters this story time. We'll read about smallest beetles to the great horned owl that call hiding places in trees home. **Age:** Best for ages 3-7 with accompanying adult(s). **RSVP required** for children and adults by 4 p.m. the day before the program at 425-452-4195 or lcvc@bellevuewa.gov. Indoor program.

STREET SMART RACOONS

Sunday, July 7, 2:30-3:30 p.m.

Saturday, July 20, 2:30-3:30 p.m.

Finding masked bandits in your garbage can be startling, but there's no need to be afraid! Come learn more about our problem-solving neighborhood raccoons and how they've learned to navigate our urban environments. **Age:** Best for children ages 5-10 with accompanying adult(s). **No pre-registration or RSVP required.** Indoor/outdoor program.



WILDERNESS TEA PARTY

Saturday, July 13, 10-11:30 a.m.

Saturday, August 10, 10-11:30 a.m.

Join us for a tea party where you never know what new friends you'll make! Learn who lives in our forests and listen to the sounds of nature as we sip beneath the trees. Wear that dress or tie that you don't mind getting a bit dirty and sip on a selection of decaffeinated teas. **Age:** Best for children ages 4-7 with accompanying adult(s). **RSVP required** at 425-452-4195 or lcvc@bellevuewa.gov. Outdoor program.



LIVING WITH WILDLIFE: BACKYARD BATS

Sunday, July 21, 2-3 p.m.

Washington is home to 15 species of bats! Every fall these bats find a place to hibernate, hopefully avoiding human structures in their search. Find out which species live in Bellevue and how to prevent your home from becoming a bat cave! **Age:** This program is best for adults. **No pre-registration or RSVP required.** Indoor program.



LEWIS CREEK STORY TIME: REMARKABLE REPTILES

Friday, August 2, choose one of two sessions
11 a.m.-noon OR 1:30-2:30 p.m.

Look, listen, and create during an hour of stories and crafts! If you look closely in Bellevue and step lightly, you're sure to spot one of our marvelous garter snakes! Reptiles come in all shapes and sizes that we'll learn about this story time. **Age:** Best for ages 3-7 with accompanying adult(s). **RSVP required** for children and adults by 4 p.m. the day before the program at 425-452-4195 or lcvc@bellevuewa.gov. Indoor program.



BUSY BEAVERS

Sunday, August 11, 2:30-3:30 p.m.

Saturday, August 24, 2:30-3:30 p.m.

Beavers shape the environment with help from their whole families to make places where animals of all shapes and sizes live. Join us as we learn all about nature's engineers, we'll do a fun fur experiment and go on a short walk around our wetland. **Age:** Best for children ages 5-10 with accompanying adult(s). **No pre-registration or RSVP required.** Indoor/outdoor program.



BINDWEED, BLACKBERRY, AND IVY, OH MY!

Sunday, August 4, 2-3p.m.

A monster is creeping through our gardens! It invades with runners and through clippings to choke trees and shade plantings. Join a Bellevue park ranger to learn more about the plants invading your flowerbeds and what you can do to keep them out. **Age:** This program is best for adults, but participants ages 13+ are welcome with accompanying adult(s). **No pre-registration or RSVP required.** Indoor program.



Visitor Centers



***Mercer Slough Environmental
Education Center***
425-452-2565
1625 118 Avenue SE

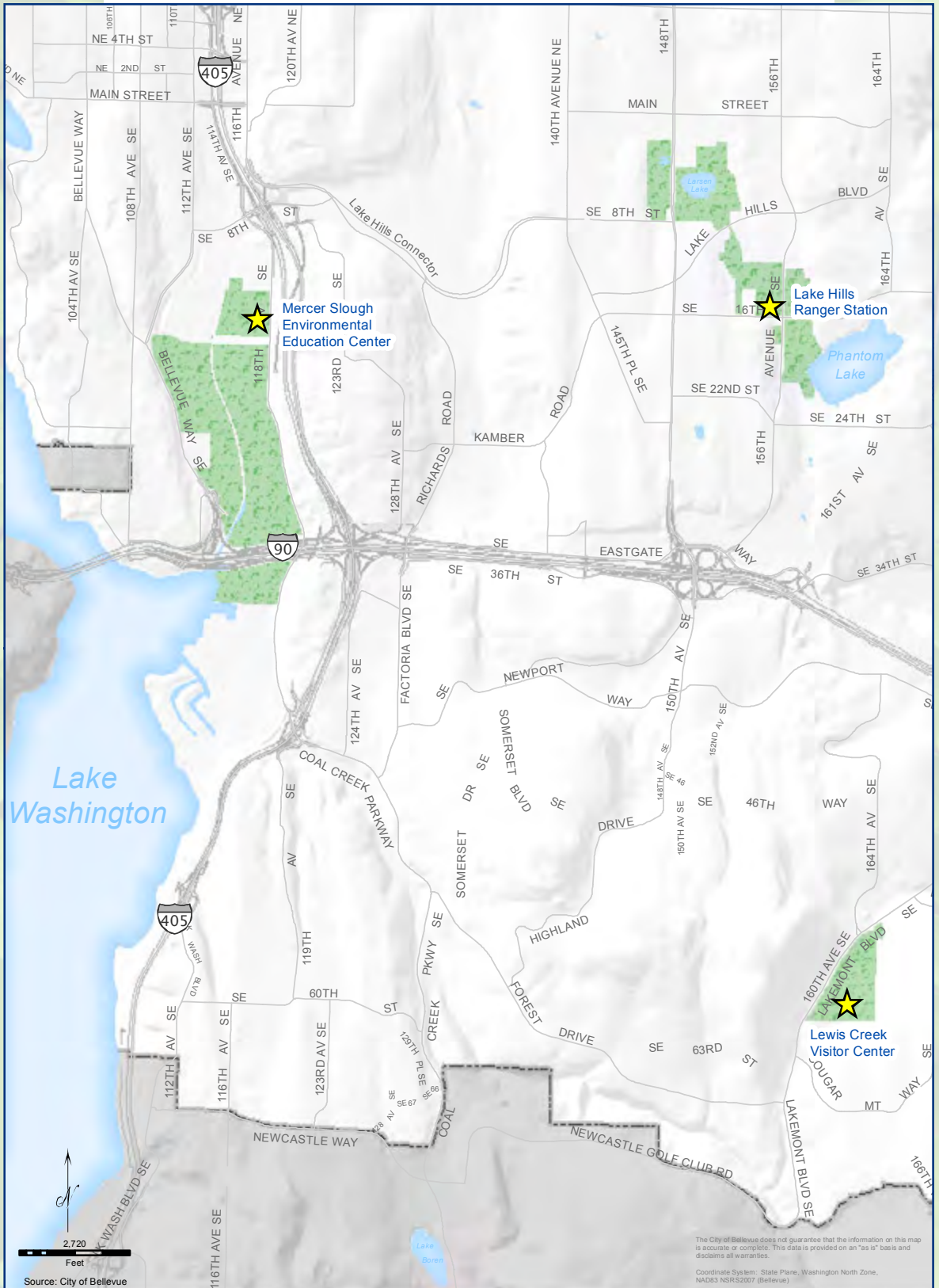


***Lake Hills Greenbelt
Ranger Station***
425-452-7225
15416 SE 16 Street
(15500 SE 16 Street:
Parking Location)



Lewis Creek Visitor Center
425-452-4195
5808 Lakemont Blvd SE

Visitor Center Locations



The City of Bellevue does not guarantee that the information on this map is accurate or complete. This data is provided on an "as is" basis and disclaims all warranties.

Coordinate System: State Plane, Washington North Zone, NAD83 NSRS2007 (Bellevue)

[illegible]

Mercer Slough Environmental Education Center
425-452-2565
1625 118 Avenue SE

Lake Hills Greenbelt Ranger Station
425-452-7225
15416 SE 16 Street
15500 SE 16 Street: Parking Location

Lewis Creek Visitor Center
425-452-4195
5808 Lakemont Blvd SE



Bellevue Parks & Community Services



For alternate formats, interpreters, or reasonable accommodation requests please phone at least 48 hours in advance 425-452-2565 (voice) or email dvannieula@bellevuewa.gov. For complaints regarding accommodations, contact City of Bellevue ADA/Title VI Administrator at 425-452-6168 (voice). If you are deaf or hard of hearing dial 711. All meetings are wheelchair accessible.

